

95
MTAUBURN ST
HARVARD SQUARE



2,000 – 5,000 SF RETAIL SPACE AVAILABLE

PROPERTY HIGHLIGHTS

95 Mount Auburn Street is a three-story, 13,308 SF office/retail building with a prime location in the heart of historic Harvard Square, overlooking Winthrop

Square. The building is steps away from public transportation, the Charles Hotel, One Brattle Square, and a host of retail, restaurant, and banking services.



Signage opportunity with frontage on Winthrop Square



Oversized ceiling heights, 13 ft from deck to floor



Located in Heart of Harvard Square



Steps from Harvard Station



Amenity-rich Location



Close proximity to Harvard University

[CLICK BELOW TO VIEW OUR LATEST VIDEO](#)



DEMISING OPTIONS

1. 2 TENANTS

2. SINGLE TENANT



DEMISING OPTIONS

1. 2 TENANTS

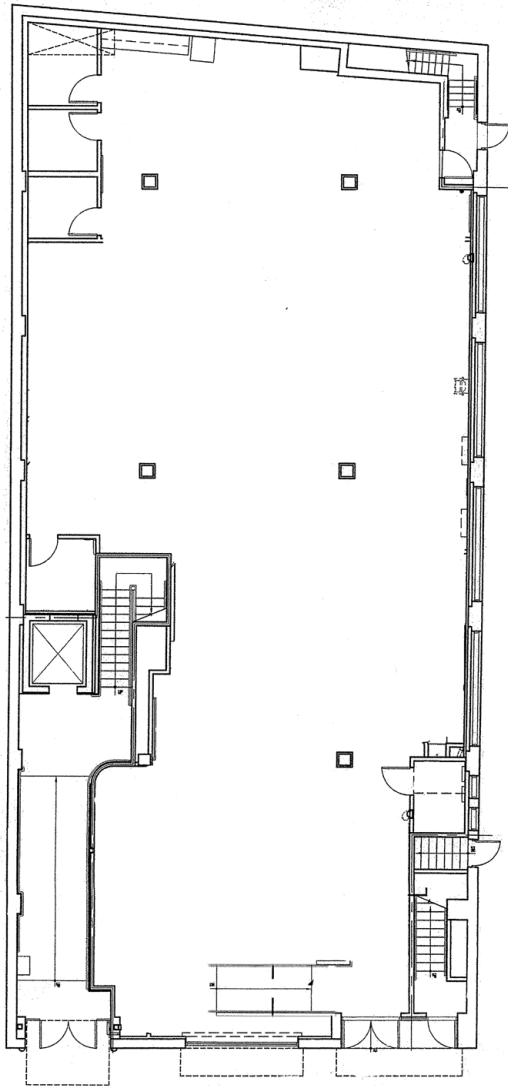
2. SINGLE TENANT



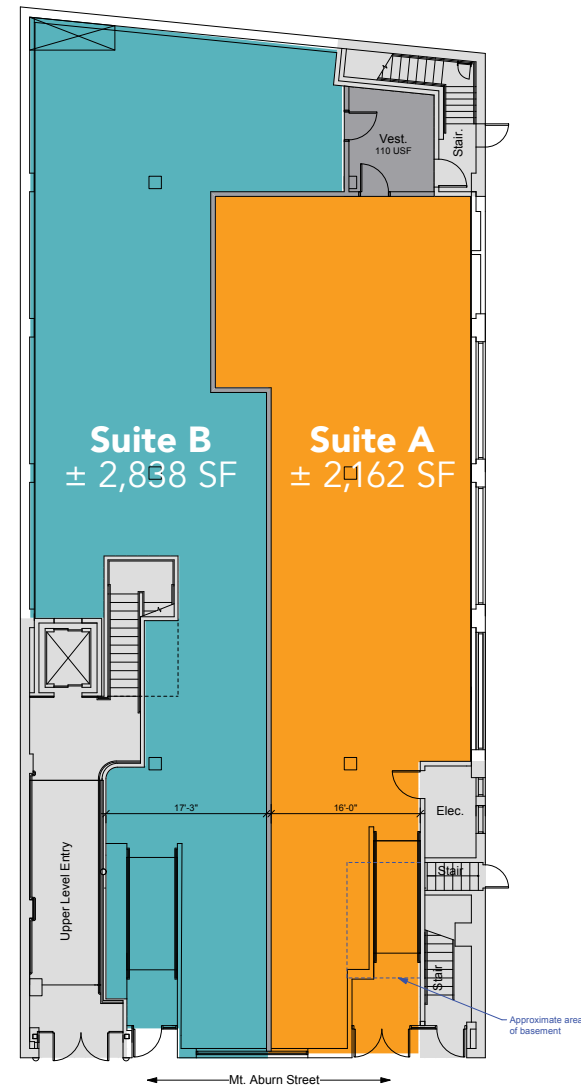
FLOOR PLANS

[CLICK TO VIEW MATTERPORT](#)

Floor 1 | 5,000 SF Available



Floor 1 | 2,000 - 5,000 SF Available



ACCESS & NEIGHBORHOOD

 HARVARD SQ.


99

Walk Score


81

Transit Score


98

Bike Score



GREG COVEY
greg.covey@nrmk.com
617.863.8459

ALDEN BUSH
alden.bush@nrmk.com
781.799.8615

MATT CURTIN
matt.curtin@nrmk.com
860.863.8630

MIKE WILCOX
mbw@bulfinch.com
781.707.4182

**Bulfinch
NEWMARK**